



# Analyzing Houston Airport Delays

- When Should You Fly Out for Winter Holidays?

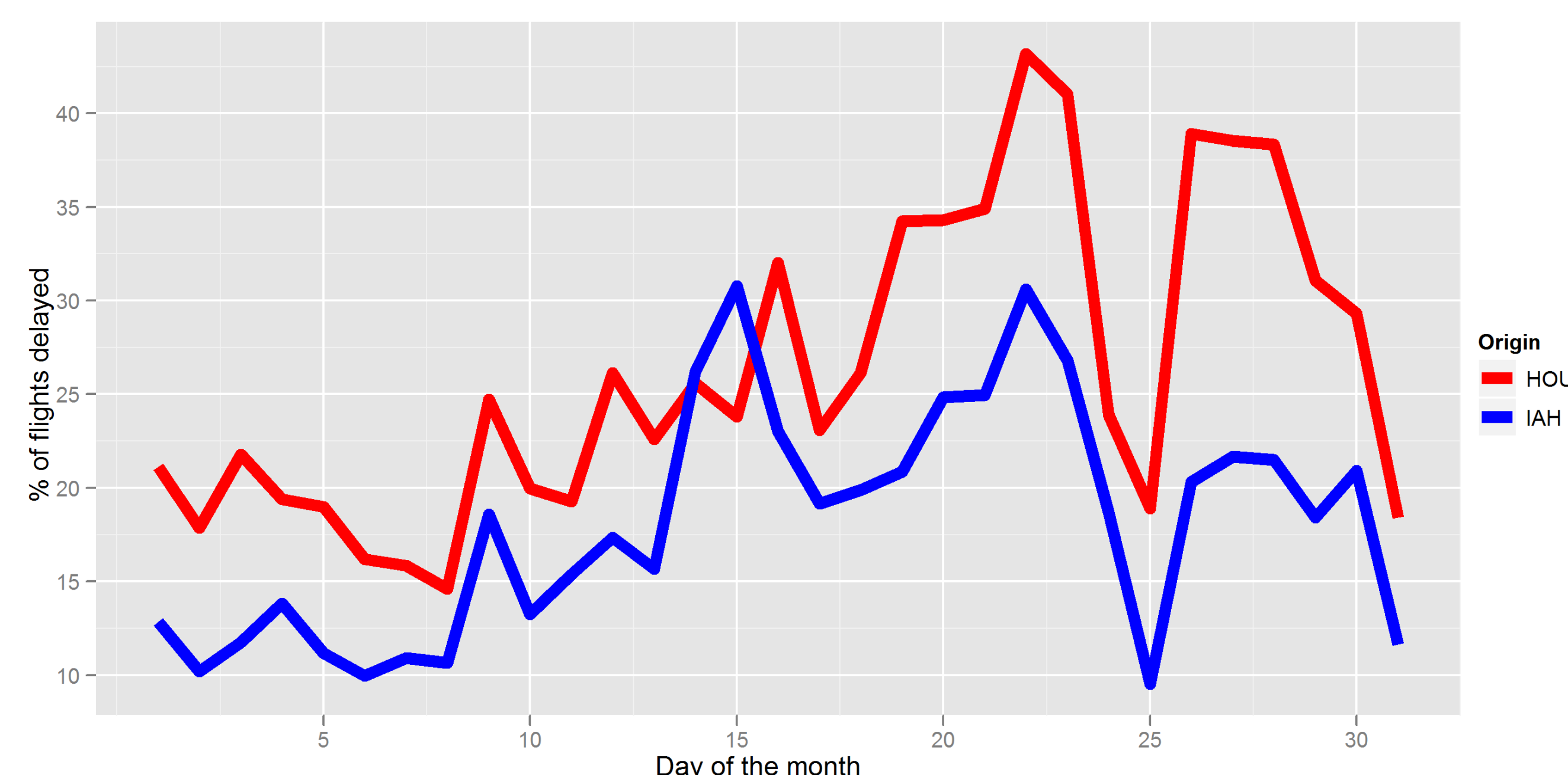
Sangyoon Lee, Hyun Bin Kang, Heewon Park



## Houston Airports in December

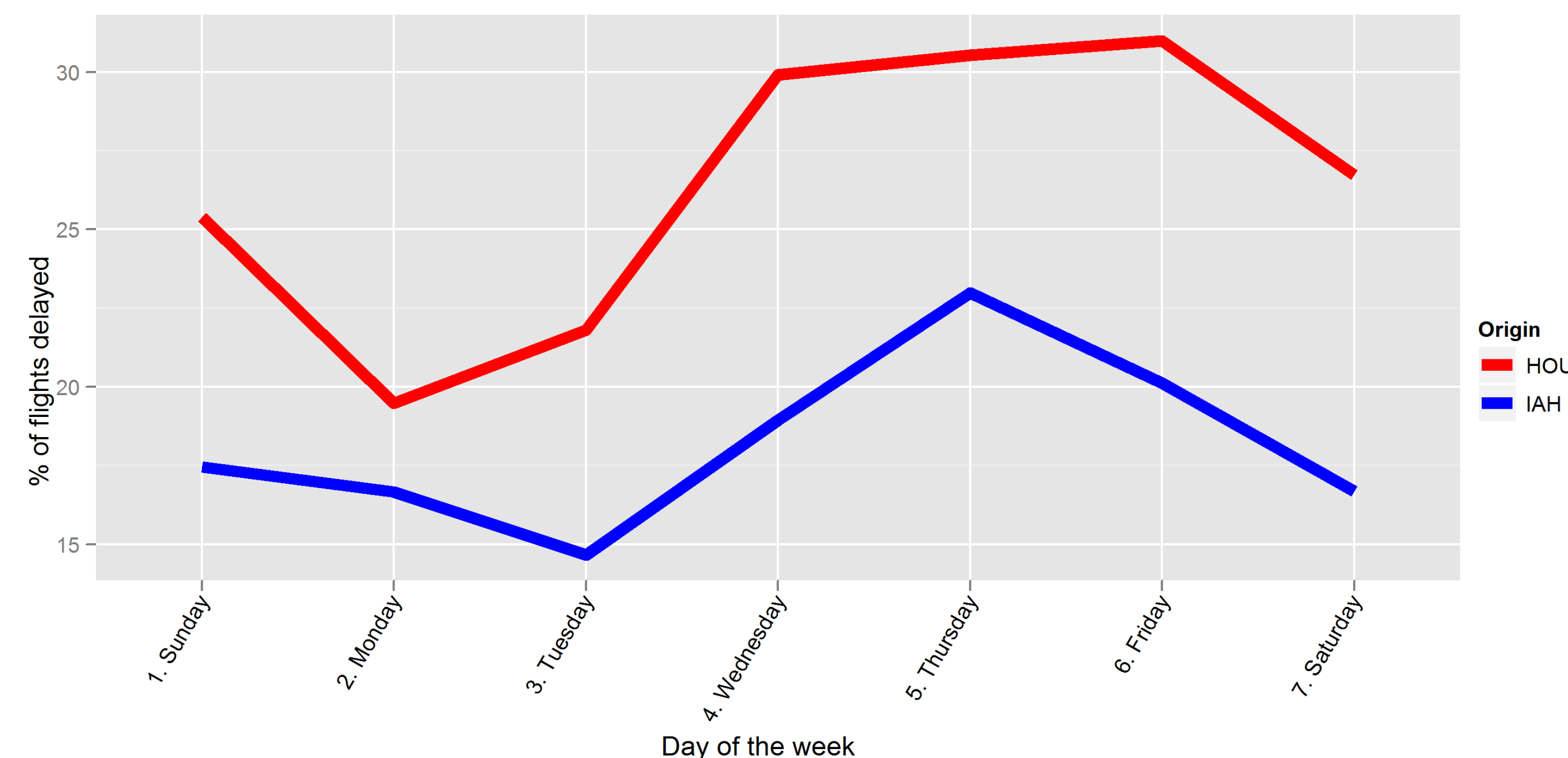
- IAH—Intercontinental Airport and HOU—Hobby Airport
- Lots of Delays in December for Winter Holiday season
- When should one fly for home for the holiday to avoid significant delays?
- Analyzed departure delays at IAH and HOU during December from 1999 to 2008
- Data from <http://stat-computing.org/dataexpo/2009/>

## By the Day of the Month



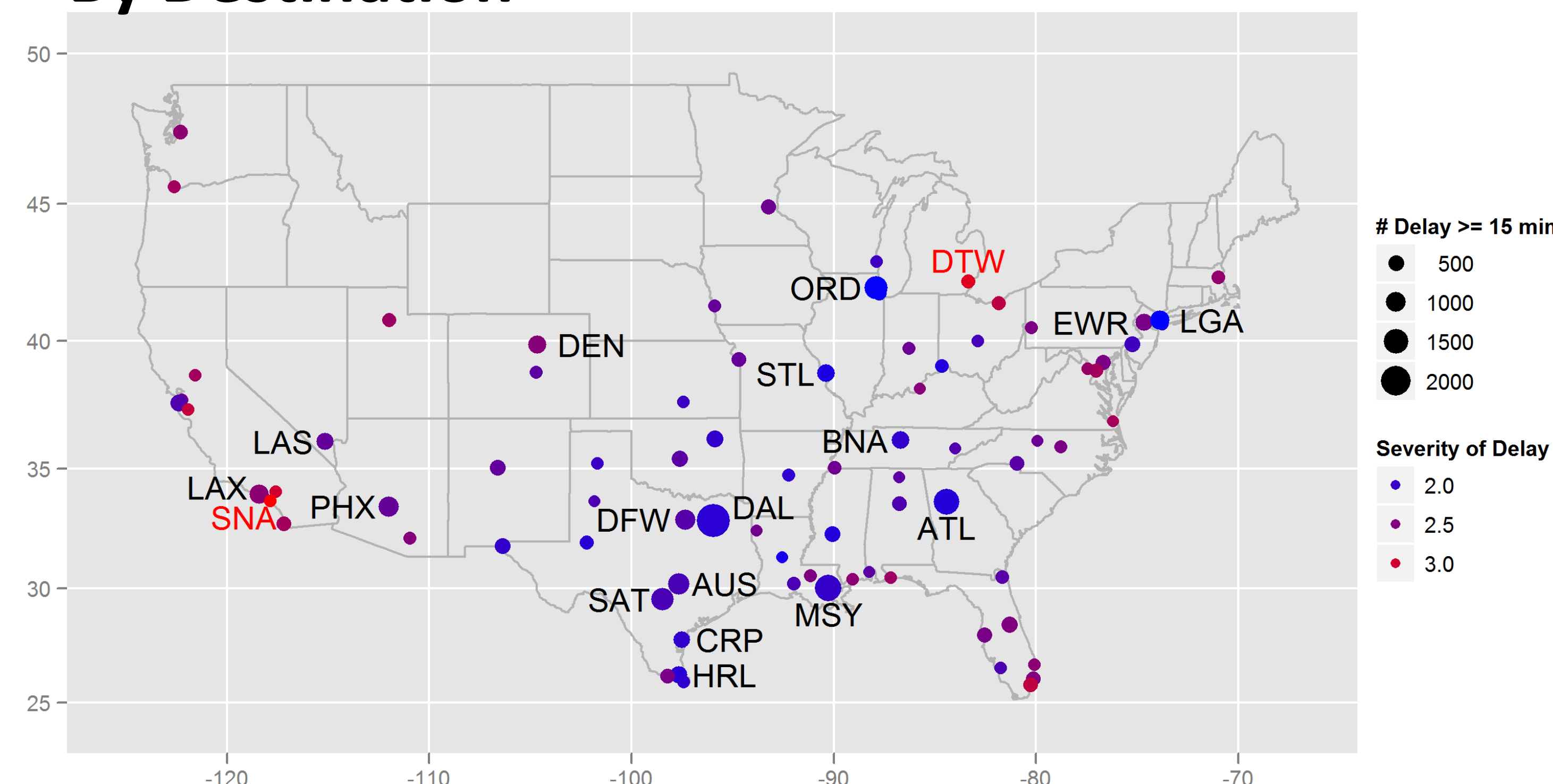
- Percent of flights delayed for each airports by the day of the month
- More flights delayed toward as it gets close to Dec 25
- Delay gets better right after/before Dec 25

## By the Day of the Week



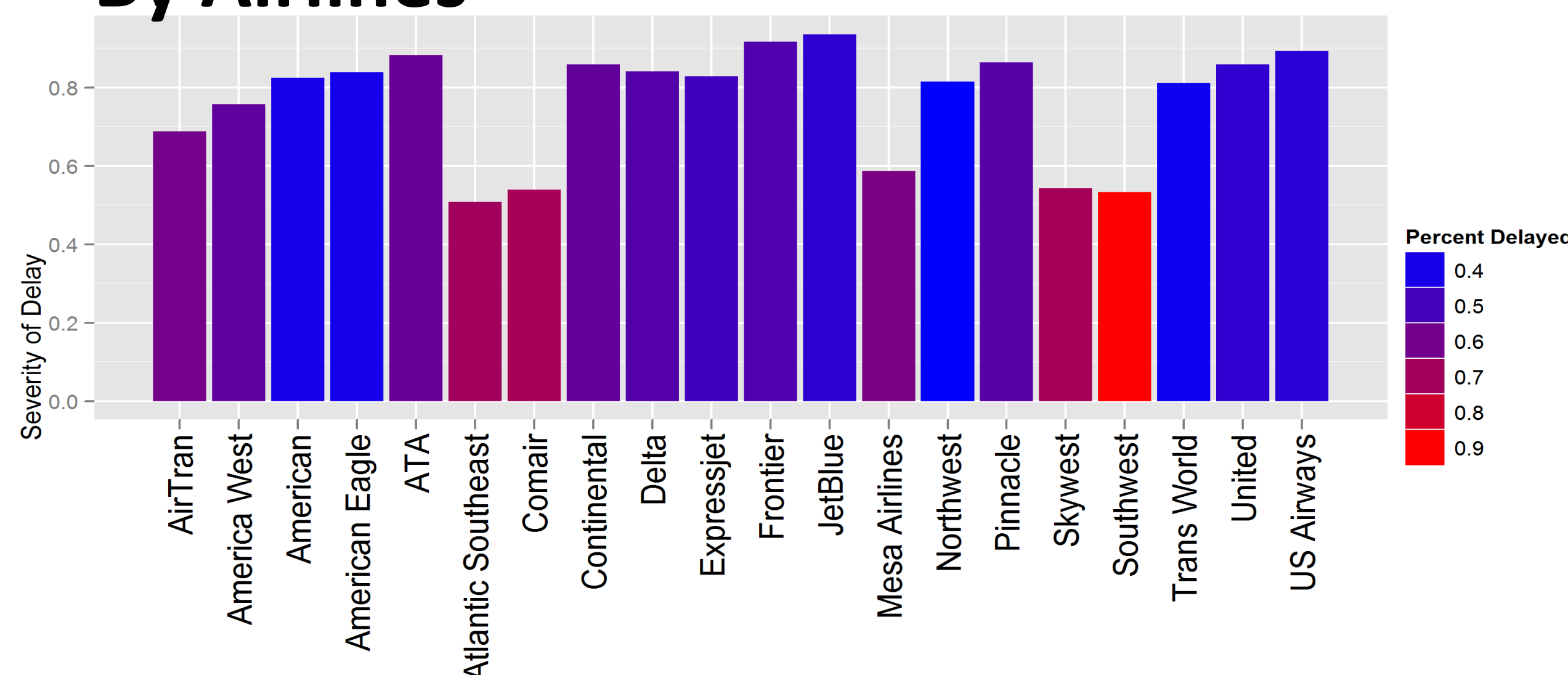
- Monday is the best day to fly
- Friday is the worst day

## By Destination



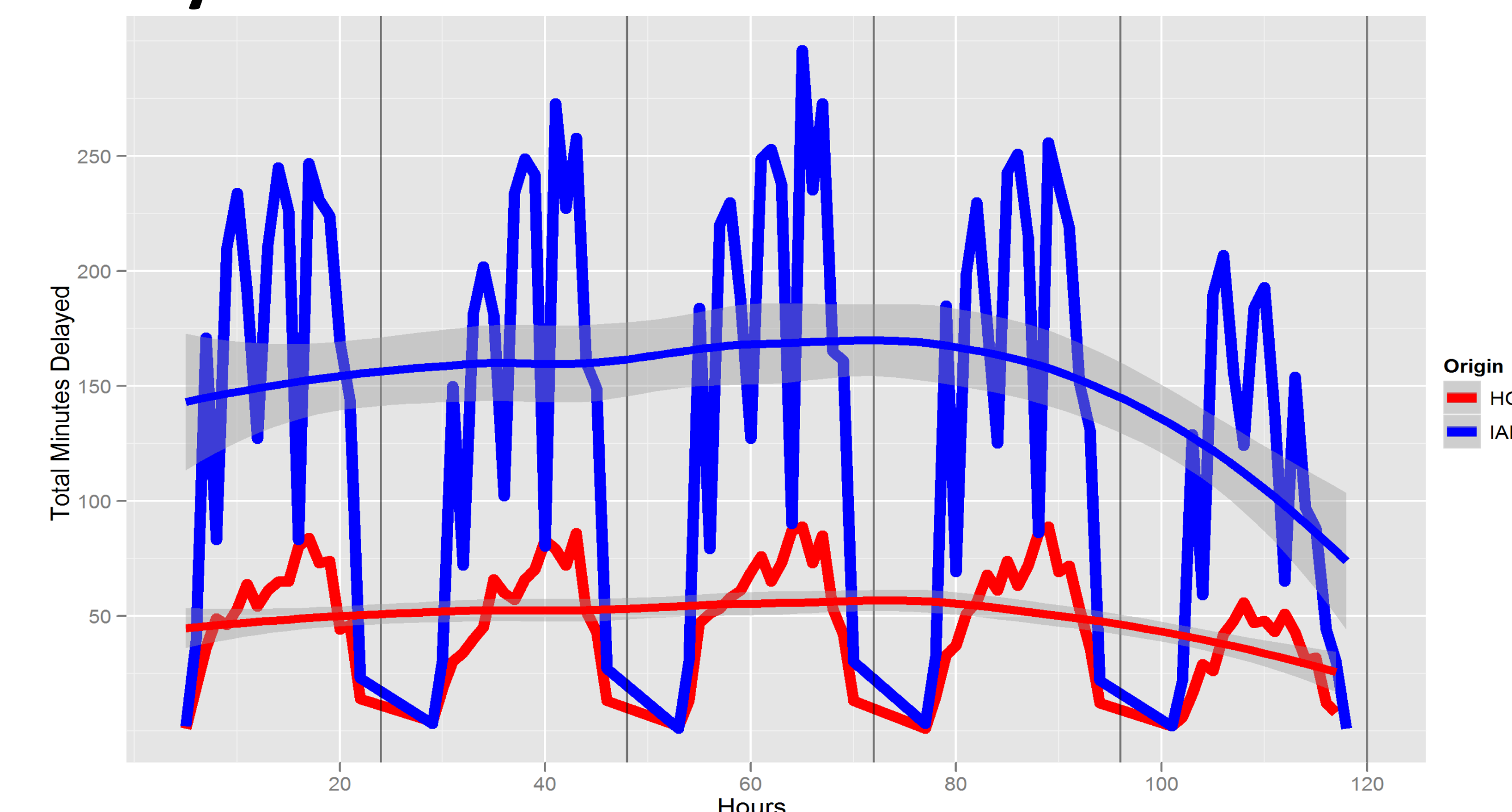
- Severity calculated by dividing total minute of delay by number of flights delayed more than 15 minutes
- Airports in Large cities suffer a lot of delays
- Airports in the Northern region experience severe delays
- Underequipped airports experiences a lot of delays as well—Many regional airports in Texas are underequipped

## By Airlines



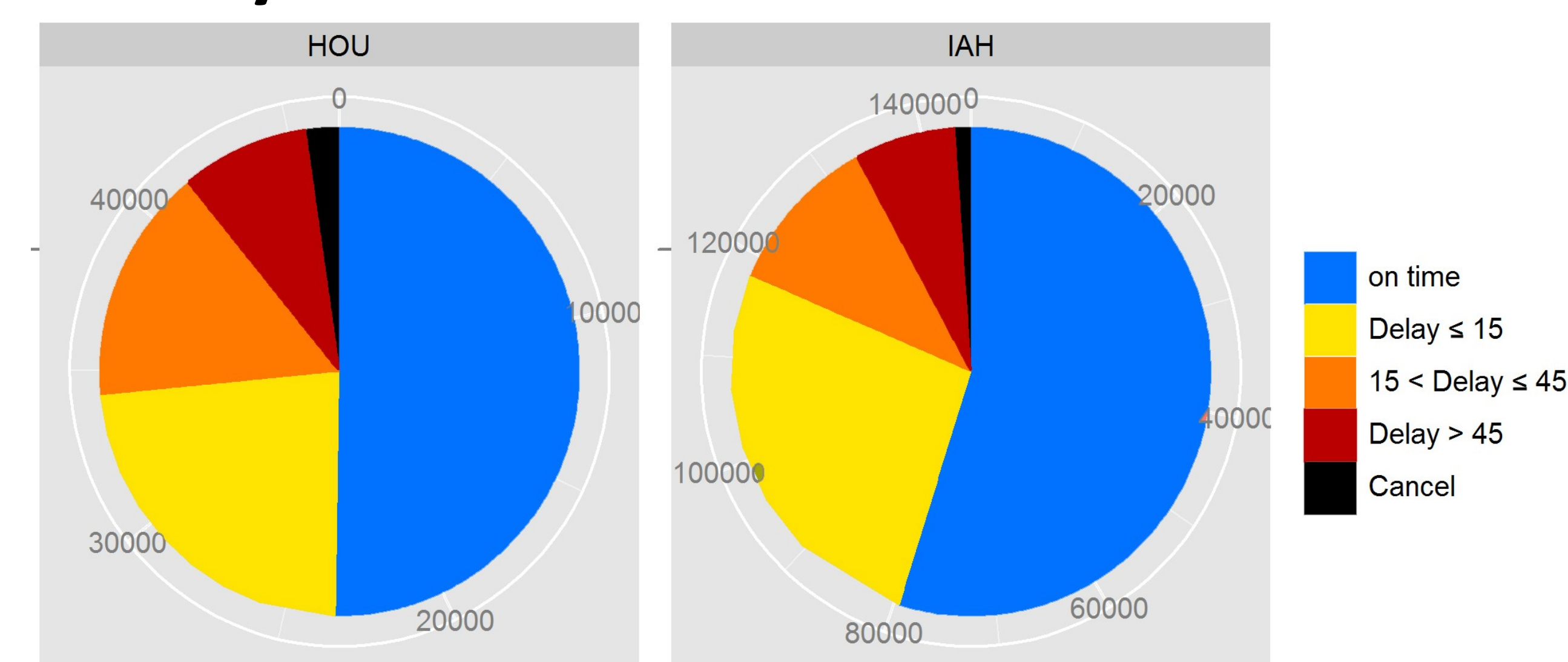
- Pinnacle under NWA (Now Delta), Comair with Delta
- American West is now US Airways (after 2008)
- Southwest suffers from many minor delays
- JetBlue has longer delays
- Regional Airlines that fly into HOU experiences severe delays—Air Tran, Frontier, JetBlue

## By Time



- Delay by hours on 20 — 24 are displayed
- 48th hour = 21st day of December
- Evening delays are very long
- Morning delays are much better

## Hobby or Bush?



- Hobby gets more delays—Mostly from small airlines
- Bush airport does better job in on time performance

## To Minimize Delay, Fly out at....

- Before 20 or right before 25
- George Bush Intercontinental Airport
- Avoid Friday and evening flights
- Major Airlines do better job on on-time performance